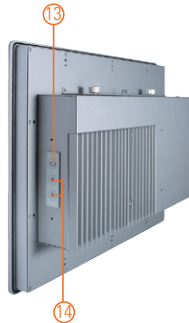
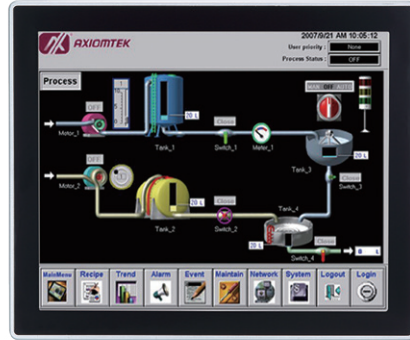


# GOT3177T-311-FR NEW

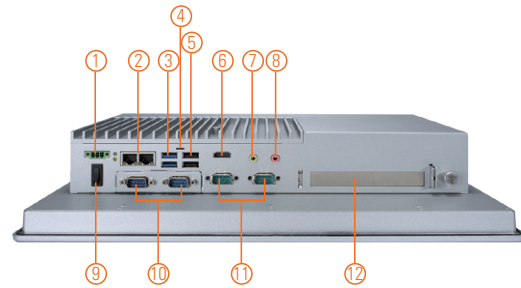
17" SXGA TFT Flat Bezel Expandable Touch Panel Computer with Intel® Pentium® Processor N4200 (0°C to +60°C)

## Features

- 17" SXGA TFT flat resistive touch
- Fanless and modularized design
- Intel® Pentium® processor N4200 (Apollo Lake-M)
- 2.5" SATA HDD and mSATA
- WLAN module & antenna (optional)
- 2 Gigabit LAN, 2 USB 2.0, 2 USB 3.0, 4 COM Port and 1 PCIe riser card expansion slot (optional)
- IP65 front bezel
- Supports panel mount and optional VESA arm/desktop stand/wall mount



▲ Rear view



1. Terminal block for DC power input
2. Ethernet x 2
3. USB 3.0 x 2
4. AT/ATX selectable switch
5. USB 2.0 x 2
6. HDMI output
7. Audio (Line-out)
8. Audio (Mic-in)
9. Power switch (ATX)
10. COM x 2 (cable)
11. COM x 2 (onboard)
12. PCIe riser card expansion slot x 1 (optional)
13. Backlight switch
14. Brightness adjust +/-



▲ Top view



## Introduction

The GOT3177T-311-FR adopts a 17-inch SXGA LCD and supports Intel® Apollo Lake processor. By supporting a wide range operating temperature from 0°C ~ +60°C, it can be used in harsh environment. The rugged industrial panel PC supports low power Intel® Pentium® processor N4200. It also provides 2 PCI Express Mini Card slots for 3G, wireless network connectivity and 1 PCIe riser card slot (optional) for more expansions. The 17" flat front bezel touch panel computer is suitable for transportation, heavy-duty industry, smart factory automation, and oil pipe monitoring systems.

### Wide Temperature Range

The Intel® Apollo Lake-based GOT3177T-311-FR applies unique extended temperature technology with wide temperature range support as we as fanless operation. It also has a compact design for harsh environment.

### WLAN Antenna Supported (optional)

The 17" SXGA IP65 industrial panel PC, GOT3177T-311-FR, provides 2 PCI Express Mini Card slots and WLAN/3G antennas for wireless network connectivity.

## Specifications

|             |                                 |   |
|-------------|---------------------------------|---|
| Front Bezel | IP65 front bezel                |   |
| LCD Panel   | Display Type                    | 17" SXGA TFT LCD  |
|             | Brightness (cd/m <sup>2</sup> ) | 350 nits  |
|             | Resolution                      | 1280 x 1024   |
| Main System | CPU                             | Intel® Pentium® processor N4200 4C @1.6 GHz (Apollo Lake-M) |
|             | Chipset                         | SoC Integrated  |
|             | System Memory                   | 1 x 204-pin DDR3L-1333/1600 SO-DIMM, up to 8GB              |
|             | BIOS                            | AMI UEFI BIOS   |
|             | Storage                         | 1 x 2.5" SATA HDD<br>1 x mSATA                              |
|             | Watchdog Timer                  | 255 levels, 0 ~ 255 sec.                                    |
|             | Onboard Graphics                | Integrated Intel® HD Graphics                               |

## Specifications

|                     |   |
|---------------------|---|
| I/O Connector       | 2 x RS-232<br>2 x RS-232/422/485 (default RS-232)<br>2 x Audio (Line-out/Mic-in)<br>2 x USB 2.0<br>2 x USB 3.0<br>2 x 10/100/1000 Mbps Ethernet (Intel® i210IT) |
| Expansion Interface | 1 x PCIe mini card slot (with SIM slot, full-size)<br>1 x PCIe mini card slot (supports mSATA, full-size)<br>1 x PCIe riser card slot (optional)                |
| Touchscreen         | Flat resistive touch  |
| Power Supply        | DC version: 9 ~ 36 VDC  |
| Power Consumption   | 69W   |
| Dimensions          | 398.02 mm (15.64") (W) x 59.9 mm (2.36") (D) x 330.44 mm (13.01") (H)   |
| Packing Dimensions  | 510 mm (20.08") (W) x 190 mm (7.48") (D) x 540 mm (21.26") (H)  |
| Weight (net/gross)  | 5.7 kg (12.6 lb) / 8.0 kg (17.6 lb)   |
| Environment         | Operating temperature: 0°C ~ +60°C (+32°F ~ +140°F)<br>Relative humidity: 20% ~ 90% @ 40°C; non-condensing<br>Operation vibration:<br>1.0 G, 10 ~ 500Hz         |
| Certificate         | CE  |

## Ordering Information

|                    |  |
|--------------------|--|
| GOT3177T-311-FR-DC | 17" SXGA TFT fanless touch panel computer with Intel® Pentium® processor N4200 1.6 GHz quad core, 5-wire flat resistive touch screen and 9 ~ 36 VDC terminal block connector |
|--------------------|--|

## Optional EOS Installation

Windows® 10 IoT Enterprise

## Optional OS Installation

Windows® 10

## Dimensions

